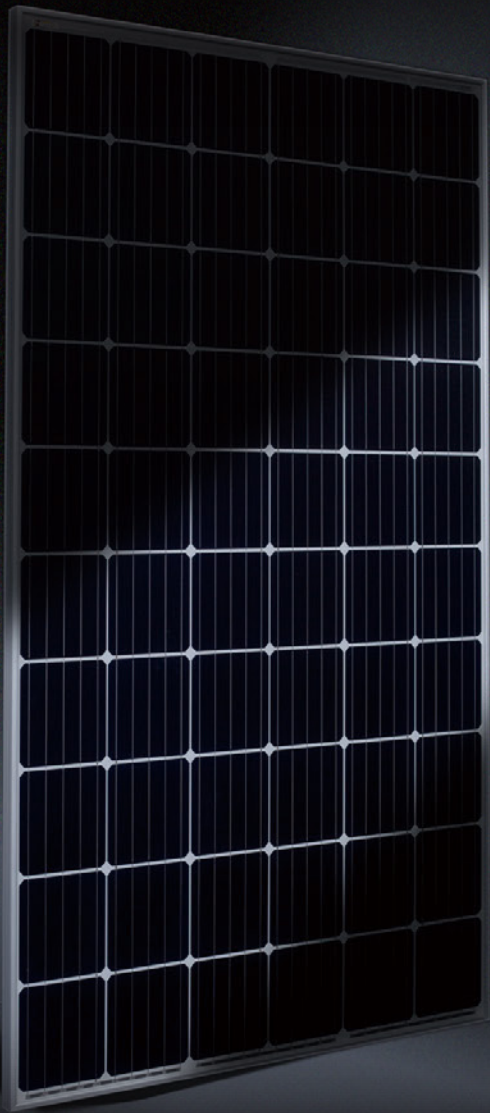




AESOLAR

since 2003



HSF

**SMART HOT-SPOT FREE
SHADING RESISTANT TECHNOLOGY**

Maximizing the energy yield

30
years
Performance
Warranty

15
years
Product
Warranty

320W-335W
AE SMB-60 Series

MONO-CRYSTALLINE PV MODULES
FULL CELLS • MONO-FACIAL

www.ae-solar.com

Ver. 24.1.1



FULL
CELLS



SHADING
RESISTANT



HOT SPOT
RESISTANT



LID
RESISTANT



PID
RESISTANT



SALT CORROSION
RESISTANT



SAND
RESISTANT



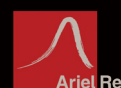
AMMONIA
RESISTANT



HIGHLY STABLE
AND TOUGH



IEC 61215 IEC 61730
Regular Production Surveillance
www.tuv.com
ID 1111251295



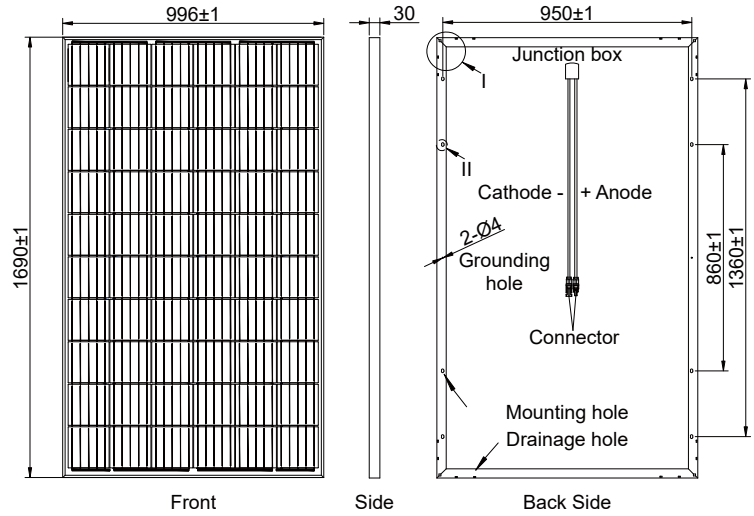
AE SMB-60 Series 320W-335W



MONO-CRYSTALLINE PV MODULES
FULL CELLS • MONO-FACIAL

Mechanical and design specification

Cell type	Mono c-Si PERC, Full cells, 158.75 mm
No. of cells	60
Front cover	3.2 mm glass, high transmission, AR coated, tempered
Encapsulation	EVA
Back cover	White Backsheet
Junction box	IP68 rated, 2 Bypass Diodes
Frame	30 mm anodized Aluminium alloy
Cable	1 x 4 mm ² , 900 mm length or customized
Connectors	MC 4 / MC 4 compatible
Dimension	1690 mm x 996 mm x 30 mm
Weight	17.5 kg
Hail resistance	Max. Ø 25 mm at 23 m/s
Wind load	2400 Pa or 244 kg/m ²
Snow load	5400 Pa or 550 kg/m ²

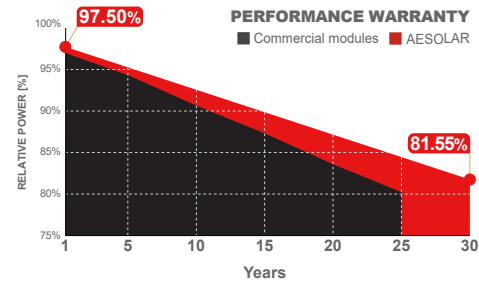
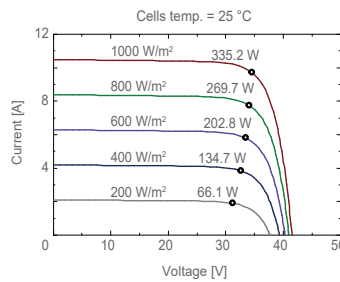
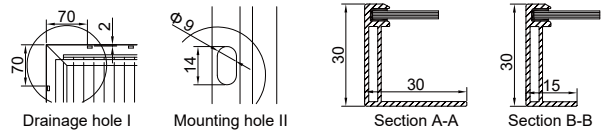


Packaging information

Packaging configuration	36 pcs / pallet
Loading capacity	988 pcs / 40 HQ
Size / Pallet	1725 mm x 1140 mm x 1117.5 mm
Weight	679 kg / pallet

Temperature ratings

Operating temperature	(°C)	-40 to +85
Temp. coefficient of P_{max}	(%/°C)	-0.37
Temp. coefficient of V_{oc}	(%/°C)	-0.28
Temp. coefficient of I_{sc}	(%/°C)	0.048
Nom. operating temp. NOCT	(°C)	45 ± 2



Electrical specifications (STC*):	AE320SMB-60	AE325SMB-60	AE330SMB-60	AE335SMB-60	
Nominal Max. Power	P_{max} (Wp)	320	325	330	335
Maximum operating voltage	V_{MPP} (V)	33.40	33.61	33.81	34.02
Maximum operating current	I_{MPP} (A)	9.59	9.68	9.76	9.85
Open-circuit voltage	V_{oc} (V)	40.90	41.10	41.31	41.49
Short-circuit current	I_{sc} (A)	10.15	10.20	10.37	10.49
Module efficiency	η (%)	19.01	19.31	19.61	19.90
Power tolerance	(W)			0~+5	
Maximum system Voltage	(V)			1000	
Maximum series fuse rating	(A)			15	

*STC: Standard test conditions (Irradiance 1000 W/m², Cell temperature 25°C and air mass of AM1.5), measurement tolerance P_{max} : ±3%

Electrical specifications (NMOT*):	AE320SMB-60	AE325SMB-60	AE330SMB-60	AE335SMB-60	
Nominal Max. Power	P_{max} (Wp)	241	245	248	252
Maximum operating voltage	V_{MPP} (V)	31.40	31.60	31.80	32.00
Maximum operating current	I_{MPP} (A)	7.67	7.74	7.81	7.88
Open-circuit voltage	V_{oc} (V)	37.71	37.90	38.10	38.30
Short-circuit current	I_{sc} (A)	8.14	8.16	8.30	8.39

*NMOT: Normal Module Operating Temperature (Irradiance 800 W/m², Ambient temperature 20°C, air mass of AM1.5 and wind speed of 1 m/s)

The specifications and characteristics contained in this datasheet may deviate slightly from our actual products due to the product developments and uncertainty of measurement devices. The specifications included in the datasheet are subject to change without prior notice.